

ozone

BLADE

MEMBRANE PROGRAMING KEYBOARD

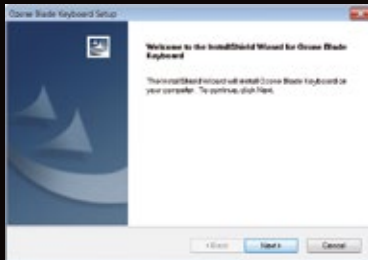


DRIVER V1.0

USER MANUAL

Software Installation

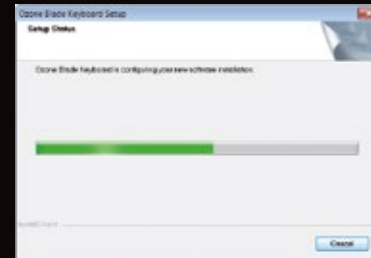
1. Before installation, please be sure to save other open applications and then exit, to avoid data loss after installation.
2. Connect the gaming keyboard with PC, open the driver files and then install the driver as the instructions as below.
3. When starting installation application, click "NEXT"



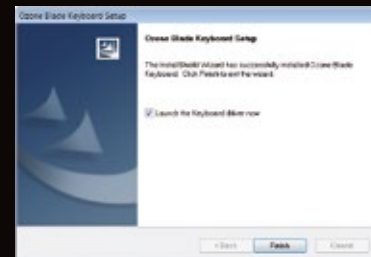
4. Choose the destination folder, then click "NEXT"



5. Then it starts to install.

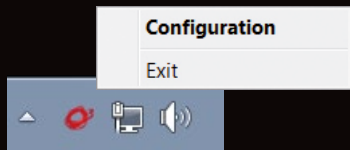


6. It comes out an option page as below after a while. Click "YES" and "FINISH" to restart the computer. After the computer restart, the installation would be finished.



Operating Interface

After the computer restart, you could find an Ozone keyboard icon on the lower right corner of the page. Right click it, chose "CONFIGURATION".



Then you could see the Blade's driver on your screen.



BACK LIGHTING

1. If you find there's no back light on the keyboard, don't worry. You should click the "Reset " button on the driver. Then click "OK" and the back-lighting starts to turn on.



2. If you want to switch the color of the back light, you should press the R&B key on the keyboard. There are two colors to be chosen, red and blue.



CURRENT PROFILE

1. Five groups of profiles can be saved in the Blade's internal memory.



2. You can press the "Profile" key on the keyboard to shift between different profiles.



THE PROGRAMMABLE KEYS

The macro keys and the function keys on the right side both are programmable. If you don't program them, the function keys still have their original function.



MACRO FUNCTION

1. If you want to program Macros with the macro recording function first click the Macro key you want to edit in the software window, then click "assign macro" and then "macro manager".

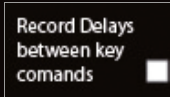
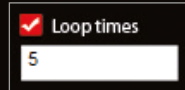


2. To create a new Macro for macro 1 key, click "NEW" and input a file name. Then press the "ENTER" key on the keyboard.



3. If you click the "RECORD" option, then you could start to record. For example you want to record "W A S D", you could press "W A S D" on your keyboard now. When you finish it, click "STOP". You can also tick "loop time" and fill in the loop times you want to configure or also tick "auto delay".

4. The "loop times" option means how many times the command would repeat. For example, if you want the "W A S D" command repeat 5 times, once you stop recording, choose the "loop time" and modify "1" into "5".



5. "Auto Delay" means that while recording the commands the driver will memorize the delay time between each key stroke.

FUNCTION KEYS

1. When you don't program them, the six function keys on the keyboard still have the default function as it marked. For example these keys below.



3. Program the key with your preferred function and then click "APPLY" to finish editing.



4. If you want to restore its default functions just click the "Reset" button on the driver.

5. 'Macro' keys and function keys can be programmable. You can record 'Macro' as the above-mentioned instruction or you can program these keys with the functions showed in the software such as 'shortcut', 'Mouse' and so on.

Specifications

- ▶ 18K gold plated USB CONNECTOR
- ▶ Anti-ghosting capability
- ▶ 8x Faster –1000 Hz Polling Rate (1 millisecond Response time)
- ▶ **Dimensions:** 510 x 199.8 x 30 mm (Length*Width*Height)
- ▶ **Approximate Weight:** 1.14 kg
- ▶ **Cable length:** 160 cm

System requirements

- ▶ Windows 98 / XP / 2000 / Windows Vista / Windows 7 / 8
- ▶ PC with built-in USB (1.1 / 2.0 / 3.0) Port
- ▶ CD-ROM drive
- ▶ 50 MB of free hard disk space

Accessories List

- | | |
|----------------|------|
| 1. Keyboard | 1 pc |
| 2. Driver Disk | 1 pc |
| 3. User Manual | 1 pc |
| 4. Package Box | 1 pc |

If you have any questions regarding technical problems please contact us via our website:

www.ozonegaming.com

You may also like

ozone

RAGE 7HX

7.1 SURROUND HEADSET



ozone

XENON

OPTICAL PRO GAMING MOUSE



ERGONOMIC
DESIGN

You're likely to forget you're wearing headsets at all.



DETACHABLE
MICROPHONE

Flexible and detachable microphone with advanced noise canceling technology.



XL EAR
CUSHIONS

Rage ear cups are covered with an advanced micro-texture cloth for a comfortable fit.



AMBIDEXTRIOUS
ERGONOMIC
DESIGN



ADVANCED
3500 DPI
OPTICAL
SENSOR



EXTRALARGE
TEFLON PADS



ON-THE-FLY
DPI TOGGLE
LED INDICATOR



RUBBER
GRIPS



CONFIGURATION
SOFTWARE